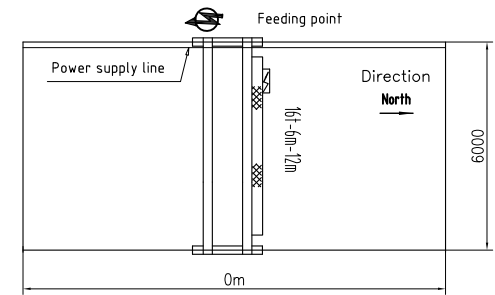
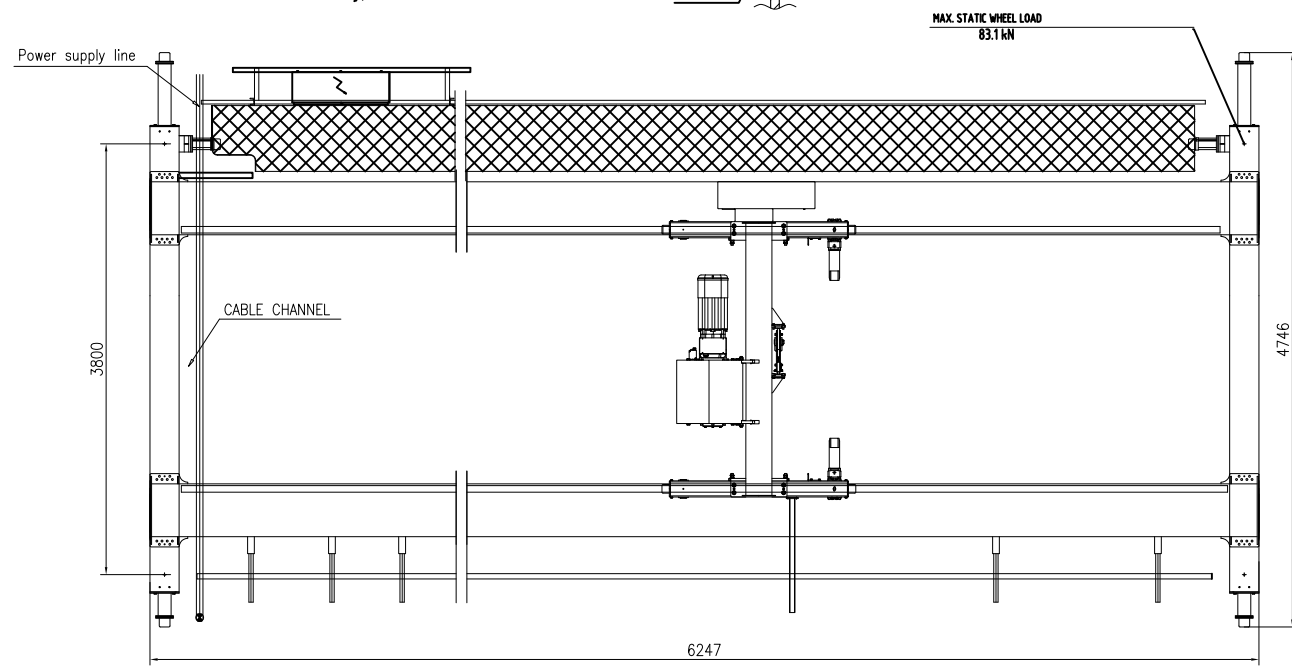


CRANE END STOP
SUPPLIED BY CUSTOMER

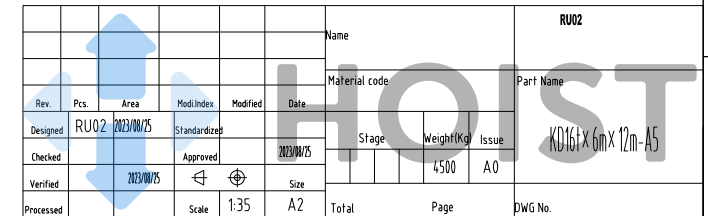
TECHNICAL DATA

LOAD.....	16t
SPAN.....	6m
LIFTING HEIGHT.....	12m
HOISTING SPEED.....	4/0.7 m/min 2-SPEED
TRAVERSING SPEED.....	0-20 m/min STEPLESS
TRAVELLING SPEED.....	0-32 m/min STEPLESS
WEIGHT OF TROLLEY.....	155t
WEIGHT OF CRANE.....	4.5t
POWER SUPPLY.....	380V/48V/50Hz
CRANE GROUP.....	FEM A5
HOIST GROUP.....	MS(FEM 2m)
BRIDGE TRAVEL GROUP.....	MS(FEM 2m)
SUPPLY POWER.....	18.5kW
TOLERANCES ACC. TO ISO/FEM STANDARD	
BRIDGE PAINT:	E120/RAL1028
DRAWING NOT IN SCALE	



PRELIMINARY DRAWING/OFFER ONLY.

Name						RU02		
Material code						Part Name		
Rev.	Pcs.	Area	Mod.Index	Modified	Date	Stage	Weight(Kg)	Issue
Designed	RU02	2023/08/25	Standardized		2023/08/25		4500	A0
Checked			Approved					
Verified		2023/08/25			Size			
Processed			Scale	1:35	A2	Total	Page	DWG No.



KD16t x 6m x 12m-A5