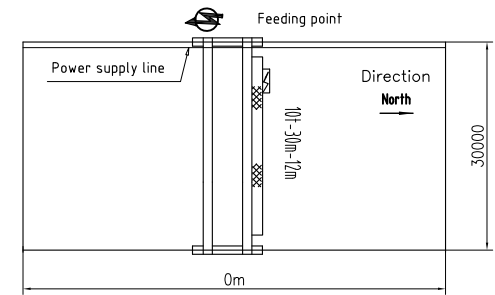
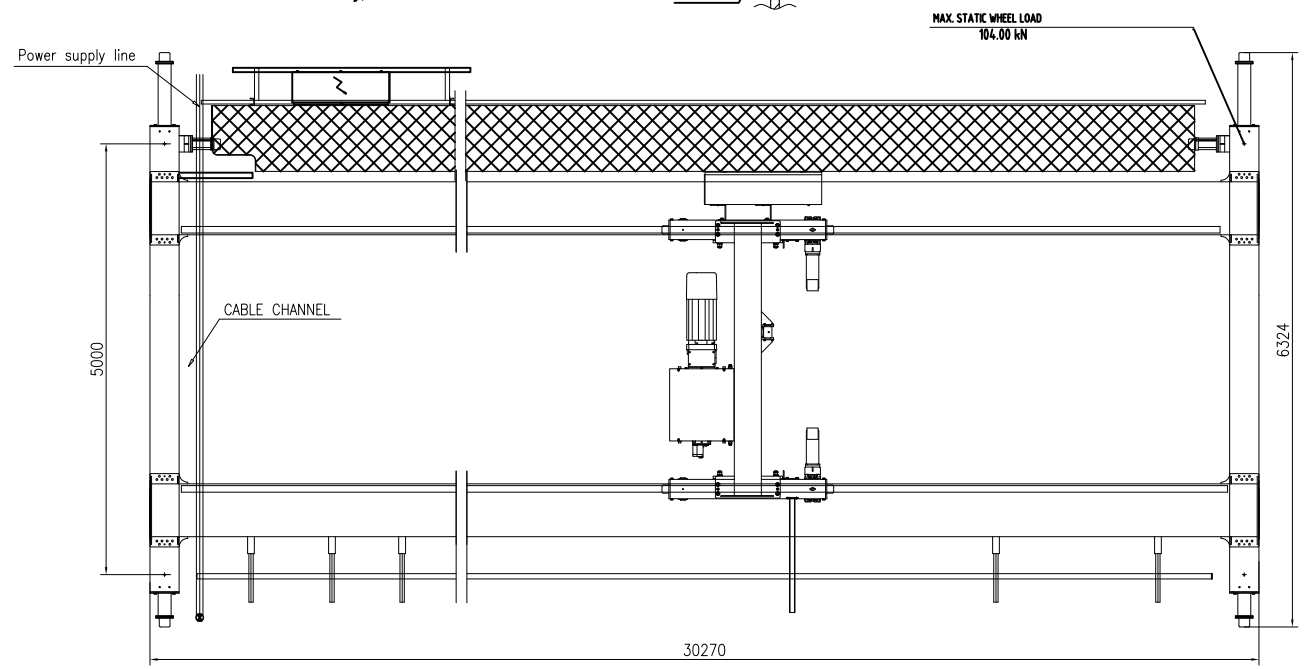


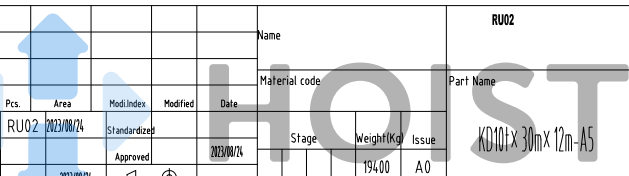
TECHNICAL DATA

LOAD.....	10t
SPAN.....	30m
LIFTING HEIGHT.....	12m
HOISTING SPEED.....	5/0.8 m/min 2-SPEED
TRAVERSING SPEED.....	0-20 m/min STEPLESS
TRAVELLING SPEED.....	0-32 m/min STEPLESS
WEIGHT OF TROLLEY.....	1.18t
WEIGHT OF CRANE.....	19.4t
POWER SUPPLY.....	380V/48V/50Hz
CRANE GROUP.....	FEM A5
HOIST GROUP.....	MS(FEM 2m)
BRIDGE TRAVEL GROUP.....	MS(FEM 2m)
SUPPLY POWER.....	14.7kW
TOLERANCES ACC. TO ISO/FEM STANDARD	
BRIDGE PAINT: E120/RAL1028	
DRAWING NOT IN SCALE	



PRELIMINARY DRAWING/OFFER ONLY.

Name						RU02	
Material code						Part Name	
Rev.	Pcs.	Area	Mod.Index	Modified	Date	Stage	Weight (Kg)
Designed	RU02	2023/08/24	Standardized		2023/08/24		19400
Checked			Approved				A0
Verified		2023/08/24			Size		
Processed			Scale	1:35	A2	Total	Page
Name						RU02	
Material code						Part Name	
Rev.	Pcs.	Area	Mod.Index	Modified	Date	Stage	Weight (Kg)
Designed	RU02	2023/08/24	Standardized		2023/08/24		19400
Checked			Approved				A0
Verified		2023/08/24			Size		
Processed			Scale	1:35	A2	Total	Page



KD10t x 30m x 12m - A5